

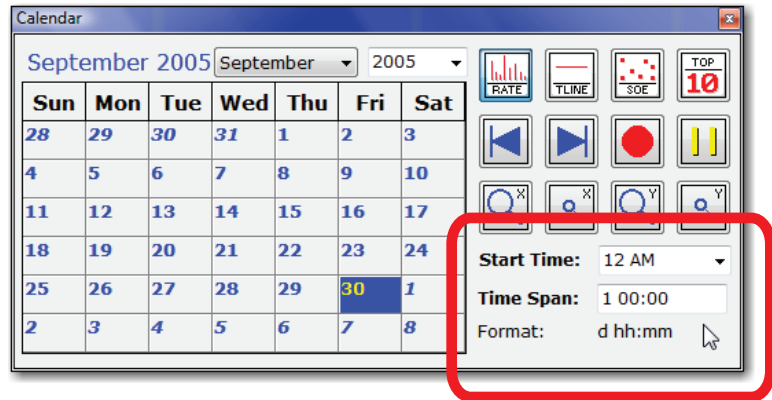
## Advanced Alarm and Event Analysis

Maximize your plant's operations!

### Time & Date Selection:

**Time Span:** Any range from 1 hour up to 365 days can now be entered. The new format is "ddd hh:mm". For example, to view data biweekly, a span of 14 days would be entered as "14 00:00". To view data based on 12 hour shifts, the span would be entered as "0 12:00"

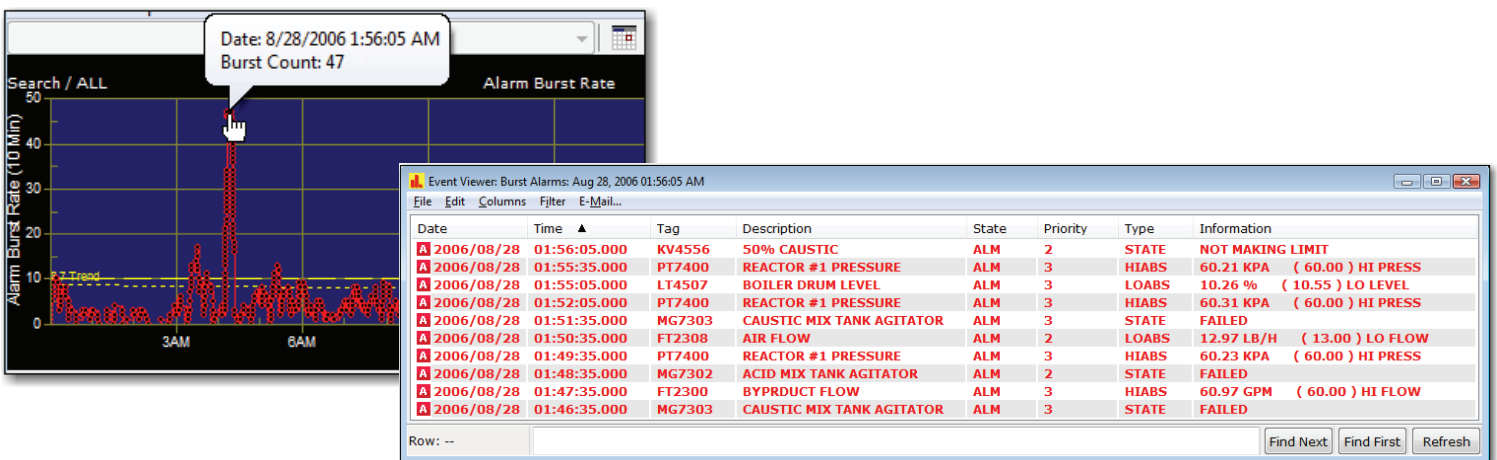
**Calendar Persistence:** When the calendar is open, its settings are used when selecting new data sources and charts. If the calendar is closed and screens update (or F5 is pressed), the charts are updated to the most current event based on the time span set in the calendar.



### Event Viewer:

**Listing Standing Alarms:** Standing alarms can be listed for any moment in time by opening the Event Viewer and selecting the Standing Alarm Chart. When a point in the chart is clicked, the Event Viewer lists the alarms making up the count. If the cursor is panned using the Left/Right keyboard arrow keys, items are dynamically updated in the Event Viewer.

**Listing Burst Rates:** The alarms making up any particular burst can be listed by opening the Event Viewer and selecting the Burst Rate Chart. When a point in the chart is clicked, the Event Viewer displays the standing alarms making up the count.



**Filter Warning:** A warning has been added to show when events have been filtered in the Event Viewer.

